



Peterson Europe

*Standing out from the crowd...
by design, by technology, by quality*



Global Leaders in Construction Vehicle Lighting

INTRODUCTION

Peterson Europe, based in Aylesbury, U.K., is the European sales, distribution and technical support partner of Peterson Manufacturing.

The company stocks and supplies superior quality lighting products for many different types of vehicles, including Construction and Heavy Plant and is an industry leader in LED vehicle lighting technology.

Peterson's ranges of European-certified Construction and Heavy Plant LED lighting products are unsurpassed in cutting-edge design, quality, and optical brilliance. The instant response, proven reliability, and long life of these products makes vehicles much safer in their environments, whilst facilitating much lower lifetime maintenance costs.

Drawing on Peterson Europe's extensive experience of European markets and belief in the benefits of using quality engineered LED lighting for on-road and off-road vehicles, prospective customers can expect excellence of customer service, from initial product application advice through to the processing and shipment of purchase orders. Original equipment manufacturers requiring application-specific products can leverage the expertise of Peterson Manufacturing's engineering and product development groups.

Sentinel Safety Products

Brought to you from a team with long experience in the development and U.K. manufacturing of LED and xenon warning products. The Sentinel product range is built on the 3 cornerstones of aesthetic design, product quality and cost effective manufacture.

sentinel
safety products

Peterson Europe design, manufacture and distribute, quality lighting products into many different sectors.



COMMERCIAL



AGRICULTURE



CONSTRUCTION



BUS & COACH



WASTE



RECOVERY



UTILITIES



AVIATION



MATERIALS HANDLING



SPECIALISED

Featured Products



90mm LED Headlamps

- ▶ A range of low beam, high beam (with or without position light) and combination headlamps
- ▶ ECE certified and DOT/SAE approved versions available
- ▶ Left-hand and right-hand traffic versions

Part numbers:

PM-707C-ECE-LHT	Low beam, left-hand traffic
PM-708C-ECE	High beam
PM-710C-ECE-LHT	Combo low/high beam, LHT
PM-707C-ECE-RHT	Low beam, right-hand traffic
PM-709C-ECE	High beam with position light
PM-710C-ECE-LHT	Combo low/high beam, RHT



NEW design LED Combination Lights – Stop / Tail / Indicator

- ▶ Improved lens design with latest diode technology
- ▶ Much brighter light output and wider viewing angles
- ▶ ECE certified for all functions when mounted horizontally or vertically

Part numbers:

PM-2290A-R	Stop/Tail /Indicator Light
PM-2291A-R	Stop/Tail /Indicator Light



LED Directional Lighting

- ▶ Combination R65 flashing LED directional and ECE certified position or side marker light
- ▶ Space saving dual function capability offers ease of installation and simpler harness layout
- ▶ Certified to ECE R65 in amber / Certified to ECE R10

Part numbers:

SL-10711	LED directional, R65 amber + side marker light, amber ECE
SL-10721	LED directional, R65 amber + rear position light, red ECE
SL-10722	LED directional, R65 red + rear position light, red ECE
SL-10741	LED directional, R65 amber + front position light, white ECE



NEW design LED Combination Lights – Stop / Tail / Indicator and fog/reverse

- ▶ Improved lens design with latest diode technology
- ▶ Much brighter light output and wider viewing angles
- ▶ ECE certified (various approvals dependent on type)

Part numbers:

PM-2219A-R	LED combo lamp – stop/tail/indicator – stud mount
PM-2219F-C	LED combo lamp – fog/reverse – stud mount

LED Beacons

Our full range of beacons are available in LED R65/R10 & Xenon. Range available as 3 bolt /single bolt /magnetic /DIN pole mount in amber /red / blue / green.



SL-41631 ▲
Kite - LED, 4 diode, single bolt, amber



SL-41511 ▲
Condor - LED R65, 3 bolt, amber



SL-40835 ▲
Eagle - Xenon 8w, single bolt, green



SL-42241 ▲
Fulmar - R65 LED, pole mount, amber

LED Directionals

Our certified LED directional products offer a wide range of fitting and mounting options to suit a wide range of applications in many market sectors. We also have 8 featured R65 types in our range. The LED directional range comes with a 3 year warranty.



SL-10461 ▲
LED directional pad, 3 diode, amber. Also available in red, blue & white.



SL-10451 ▲
LED directional pad, 6 diode, amber. Also available in red, blue & white.



SL-10431 ▲
LED R65 directional, 3 diode, amber



SL-10651 ▲
LED R65 directional pad, 6 diode, amber



SL-10441 ▲
Hawkeye R65 LED 180 directional, amber. Also available in blue.



SL-10401 ▲
LED R65 directional, horizontal mount, amber. Also available in blue & white.



SL-10421X ▲
LED R65 directional, horizontal mount, amber



SL-10426 ▲
LED R65 directional, vertical mount, amber

Light Bars

Our certified Solis LED light bar range features multiple configurations and an ease of fitting with plenty of mounting options to choose from. LED light bars come with a 5 year warranty.

- Low-profile mainstream light bar
- Heavy duty extruded aluminium base with polycarbonate housing
- Easy maintenance dome design
- Optional colour lens, illuminated centre section, traffic director, take-down light, and/or alley light
- Light bar lengths ranges from 24" up to 84" (for selected models)

SOLIS
light bar



SL-73002 ▲
New range 'Solis' light bar - 6 module, amber, 36"

LED Utility / Interior Lights

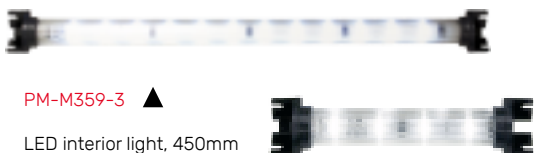


PM-M388A ▲
LED auxiliary light, amber

PM-M388C ▲
LED auxiliary light, amber

PM-M388R ▲
LED auxiliary light, red

PM-M388WB ▲
LED auxiliary light, blue



PM-M359-3 ▲
LED interior light, 450mm



PM-M359-1 ▲
LED interior light, 150mm



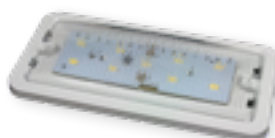
PM-M359-2 ▲
LED interior light, 300mm



PM-871W ▲
LED 'touch' light - with black bezel



PM-M397C ▲
LED exterior/ utility light
White



PM-M368 ▲
LED interior light

PM-M360-1 ▶
LED interior light



LED Work Lights

Visit www.petersoneurope.co.uk for our full range of LED work lights.



PM-913-MV ▲
LED work light, flood,
900lm



PM-910-MV ▲
LED work light, wide
flood, 1350lm



PM-901-MV ▲
LED work light, mini
spot, 700lm



PM-917-MV ▲
LED work light, intense
spot, HD, 2800lm



PM-919-MV ▲
LED work light, spot,
1900lm



PM-923-MV ▲
LED work light,
flood, 4000lm



PM-903-MV ▶
LED work light, flood, 2000lm

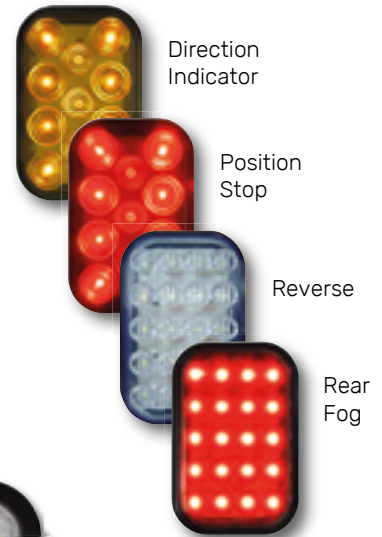
Single Function Lights & Modules

PM-1216 / 1217 / 1218 **LumenX**



Direction Indicator Position Stop Reverse Rear Fog

PM-850 Range



Direction Indicator
Position Stop
Reverse
Rear Fog

PM-1220 / 1222 / 1223 165x57mm Oval **LumenX**



Direction Indicator Position Stop Reverse

Surface Mount
& Flush Mount
Versions

NUMBER PLATE LIGHTS

PM-MB153C-MV/142 ▶
Number Plate Light



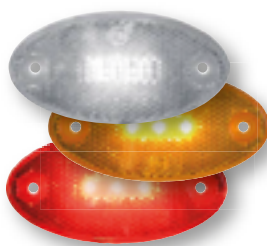
PM-1253C-MV-AMP ▶
Number Plate Light



Outline & Side Marker Lights



▲ PM-181A-MV-ECE
PM-181W-MV-ECE
PM-181R-MV-ECE
Front / Side / Rear Marker



▲ PM-1200C
PM-1200A
PM-1200R
Front / Side / Rear Marker

PM-M1268W-MV
PM-M1268A-MV
PM-M1268R-MV
Front / Side / Rear Marker



◀ PM-B1200-09H (Horizontal)
PM-B1200-09V (Vertical)
Mounting Brackets for 1200 Series

PM-M1207A-R-W-MV ▶
Combination Front / Side / Rear Marker



▶ PM-1202C-24V
PM-1202A-24V
PM-1202R-24V
Front / Side / Rear Marker
Also available in 12V

PM-1208R-W ▶
Stalk Outline Marker
Red/White



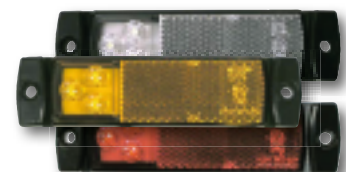
▲ PM-B168-10
Chrome Bezel for 1268 Series
Shown with light installed

▲ PM-B168-092
Aluminium Guard for 1268 Series

PM-1205A-JPT ▶
Integral 2-pin JPT connector



PM-M1203C ▶
PM-M1203A
PM-M1203R
Front / Side / Rear Marker



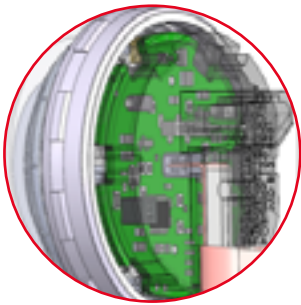


- ▶ Privately-owned safety lighting manufacturer, established in 1945.
- ▶ Headquartered in a modern 670,000 square feet facility
- ▶ 400 employees

Vertically-integrated organisation

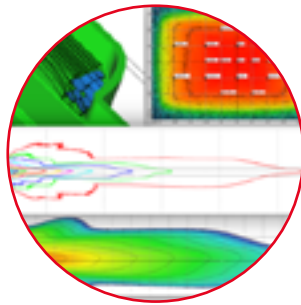
- ▶ Tooling design/manufacture
- ▶ Injection moulding
- ▶ PCB design/manufacture
- ▶ Wiring & harness design and manufacture
- ▶ Final assembly

Design



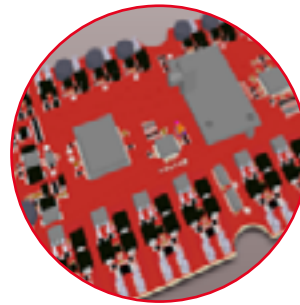
Intelligent engineering providing innovative and high-value LED lighting solutions

Optics



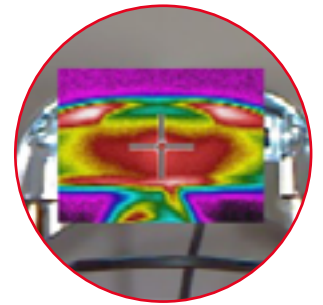
Optical design and evaluation

Electronics



PCB, circuit, hardware, and firmware development

Verification



Photometry, metrology, environmental and mechanical

The competitive advantage is:

- Custom engineering solutions
- In-house manufacturing expertise
- Rapid time to market



Peterson Europe

Peterson Europe are industry experts and leading manufacturers of LED vehicle lighting. We offer bespoke solutions, showcasing superior quality O.E. specified lighting as well as Europe wide distribution.

WWW.PETERSONEUROPE.CO.UK

+44 (0)1296 340045 sales@peterson europe.co.uk