

DATA SHEET

PM-M153C

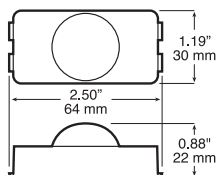
Number Plate Light



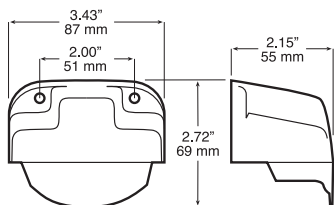
Images & Dimensions



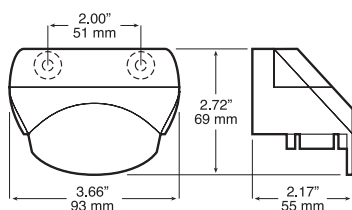
PM-M153C-MV



PM-MB153C-MV/141



PM-MB153C-MV/142



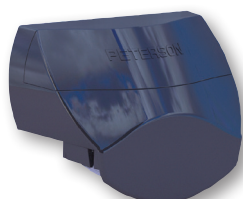
PM-M153C-MV Brackets



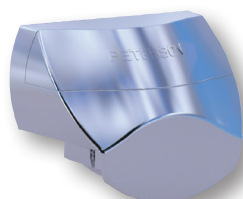
PM-B150-141



PM-B150-097



PM-B150-142



PM-B150-143

Specifications

Functions:	Number plate light
LEDs:	1 diode
Lens colour:	Clear
Certifications:	ECE Reg 4: E13 04R00 04R00 12732 01
Voltage:	Dual voltage 12/24 V
Operating range:	9-32Vdc
IP rating:	IP67
Operating temperature:	-30°C to +55°C
Mounting:	Module requires use of compatible mounting bracket
Wiring:	300mm cable with partially-stripped wires
Power rating:	1.5W @ 12V / 2.5W @ 24V
Current draw:	0.06A @ 12V / 0.03A @ 24V
Reverse polarity protection:	Yes
Warranty:	3 years

Materials

Lens: Hi-impact acrylic

Part numbers

PM-M153C-MV	Number plate light module
PM-MB153C-MV/141	Number plate light in B150-141 bracket
PM-MB153C-MV/142	Number plate light in B150-142 bracket
PM-B150-097	Surface mount bracket
PM-B150-141	Hooded bracket, black
PM-B150-142	Hooded bracket, black
PM-B150-143	Hooded bracket, chrome